

SPECIAL DISTRICT PUBLIC DISCLOSURE DOCUMENT

SECTION 14 METROPOLITAN DISTRICT

As required pursuant to Section 32-1-104.8 of the Colorado Revised Statutes (“**C.R.S.**”) this Public Disclosure Document has been prepared by Section 14 Metropolitan District (the “**District**”) to provide information regarding the District.

DISTRICT’S POWERS

The powers of the District as authorized by Section 32-1-1004, C.R.S., and under its Service Plan, as approved by Board of County Commissioners of the County of Jefferson (“**County**”) on November 11, 1986, and amended on November 7, 1989 (as amended, the “**Service Plan**”), are to design, acquire, install, construct, and maintain certain improvements, including, but not limited to, street, safety protection, storm and sanitary sewer, water, and park and recreation facilities and programs.

DISTRICT’S SERVICE PLAN

The District’s Service Plan, which can be amended from time to time, includes a description of the District’s powers and authority. A copy of the District’s Service Plan is available from the Division of Local Government in the State Department of Local Affairs (“**Division**”).

The Section 14 Metropolitan District is authorized by Title 32 of the Colorado Revised Statutes to use a number of methods to raise revenues for capital needs and general operations costs. These methods, subject to the limitations imposed by Section 20 of Article X of the Colorado Constitution (“**TABOR**”), include issuing debt, levying taxes, and imposing fees and charges. Information concerning District directors, management, meetings, elections, and current taxes are provided annually in the Notice to Electors described in Section 32-1-809(1), C.R.S., which can be found at the District office, on file at the Division, or on file at the office of the Clerk and Recorder of Jefferson and Denver Counties.

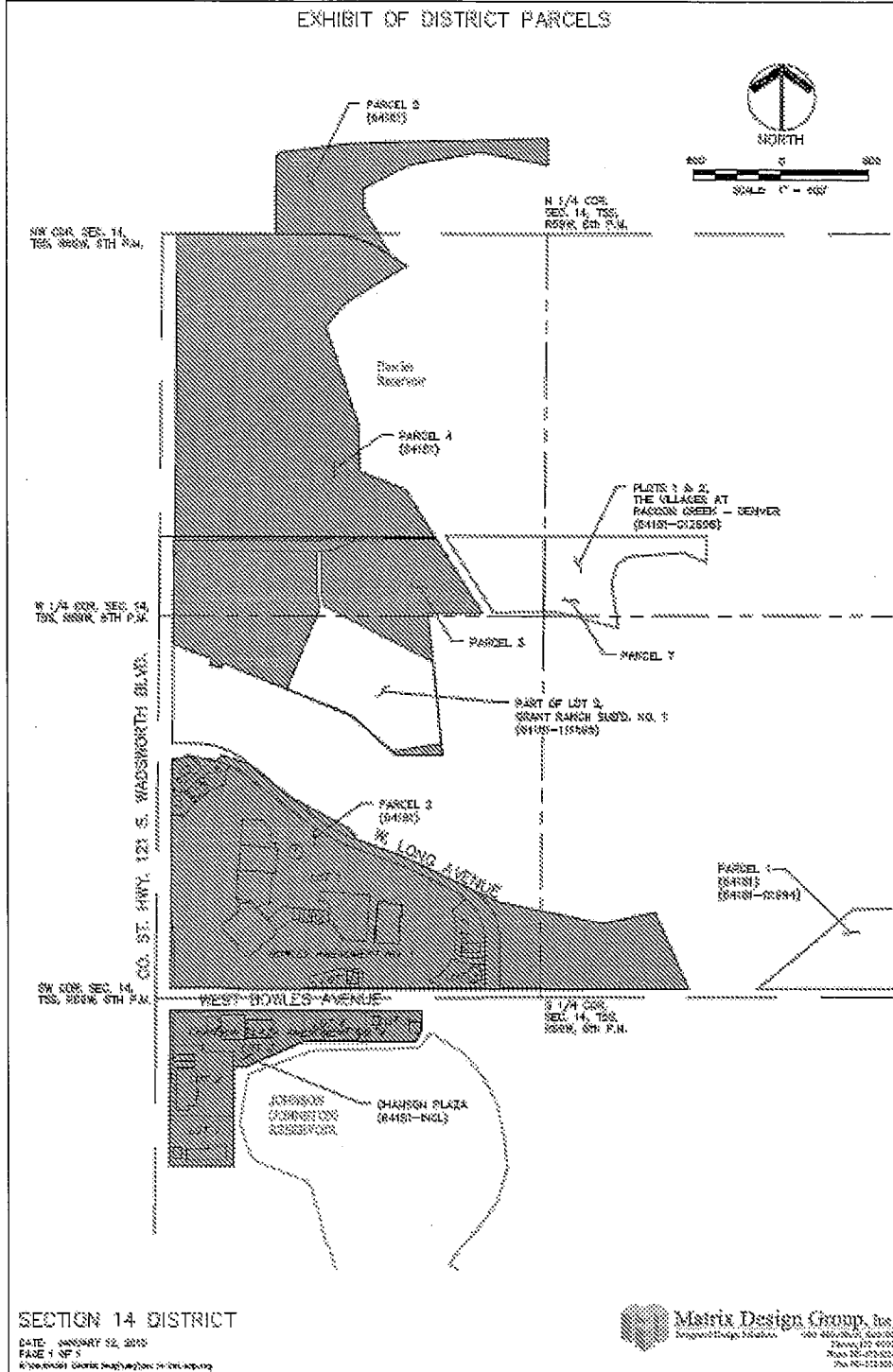
DISTRICT MAP

A map of the District’s boundaries is attached hereto as **Exhibit A**.

Dated this 16th day of December, 2014.

EXHIBIT A

District Map





SPECIAL DISTRICT PUBLIC DISCLOSURE DOCUMENT

SECTION 14 METROPOLITAN DISTRICT

As required pursuant to Section 32-1-104.8 of the Colorado Revised Statutes (“**C.R.S.**”) this Public Disclosure Document has been prepared by Section 14 Metropolitan District (the “**District**”) to provide information regarding the District.

DISTRICT’S POWERS

The powers of the District as authorized by Section 32-1-1004, C.R.S., and under its Service Plan, as approved by Board of County Commissioners of the County of Jefferson (“**County**”) on November 11, 1986, and amended on November 7, 1989 (as amended, the “**Service Plan**”), are to design, acquire, install, construct, and maintain certain improvements, including, but not limited to, street, safety protection, storm and sanitary sewer, water, and park and recreation facilities and programs.

DISTRICT’S SERVICE PLAN

The District’s Service Plan, which can be amended from time to time, includes a description of the District’s powers and authority. A copy of the District’s Service Plan is available from the Division of Local Government in the State Department of Local Affairs (“**Division**”).

The Section 14 Metropolitan District is authorized by Title 32 of the Colorado Revised Statutes to use a number of methods to raise revenues for capital needs and general operations costs. These methods, subject to the limitations imposed by Section 20 of Article X of the Colorado Constitution (“**TABOR**”), include issuing debt, levying taxes, and imposing fees and charges. Information concerning District directors, management, meetings, elections, and current taxes are provided annually in the Notice to Electors described in Section 32-1-809(1), C.R.S., which can be found at the District office, on file at the Division, or on file at the office of the Clerk and Recorder of Jefferson and Denver Counties.

DISTRICT MAP

A map of the District’s boundaries is attached hereto as **Exhibit A**.

Dated this 16th day of December, 2014.

EXHIBIT A

District Map

